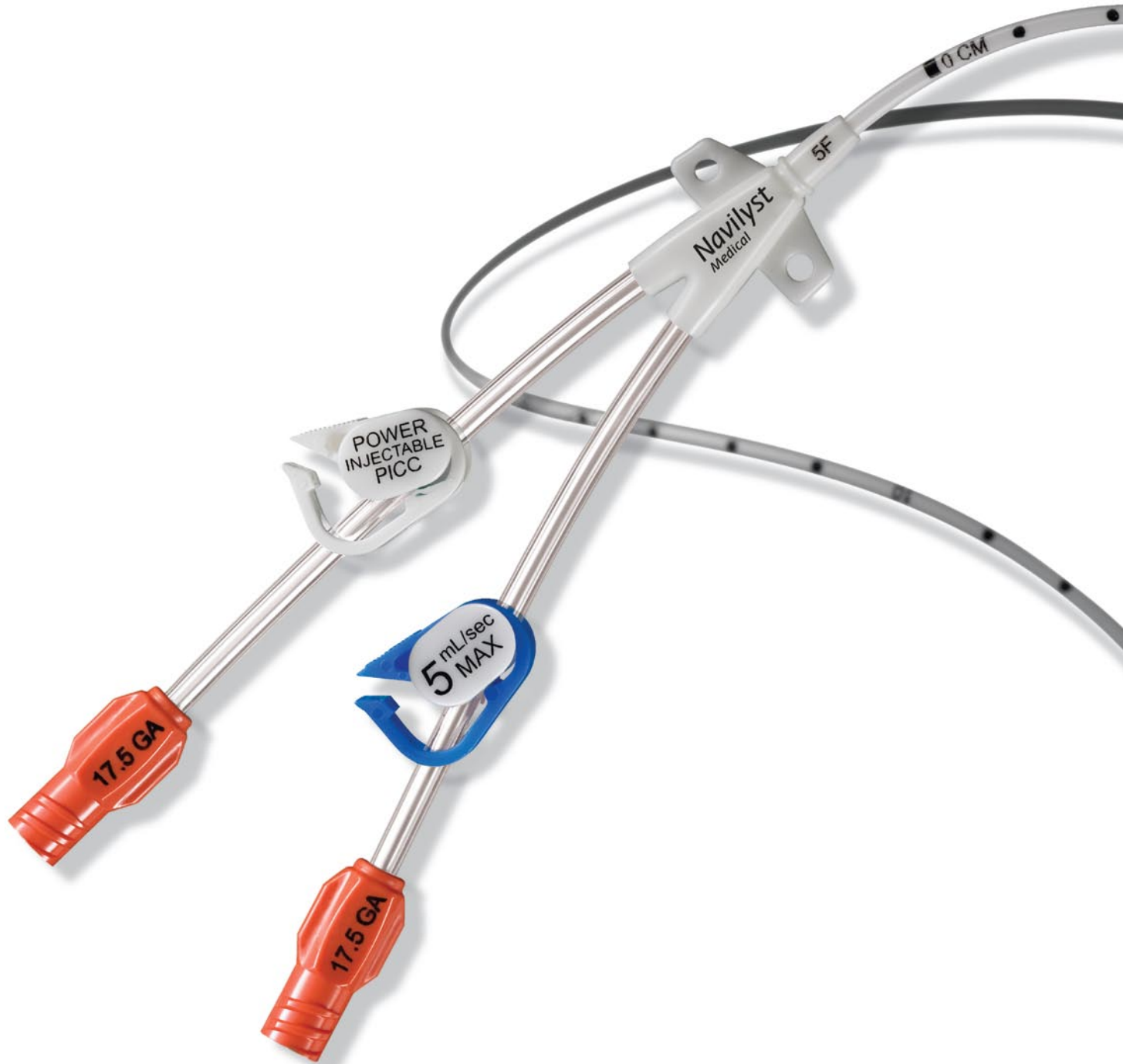


Xcela® Power Injectable PICC

Powered for Confidence





Advanced Features and Versatility Designed to Provide Confidence in Care

Confidence in Power

With fundamental PICC requirements as its foundation, the Xcela® PICC is also designed to deliver the power injection flow rates required for contrast-enhanced CTs.

Confidence in Performance

Advanced features such as large lumen diameters, reverse tapered catheter body and radiopacity are designed to augment catheter performance, from catheter placement to care and maintenance.

Confidence in Preference

With its broad range of sizes and kit configurations, the Xcela PICC provides options in a variety of placement settings, insertion techniques or patient clinical requirements.

Low Profile Hub

- Assists in easier hub manipulation
- Designed with increased patient comfort in mind

Clear Extension Tubes

- Early visualization of blood return

Reverse Tapered Catheter Body

- Designed for kink resistance
- Firm pushability for easier placement
- Designed to minimize bleeding at the insertion site
- “0 cm” marker location reduces chance of suture wing insertion

Alcohol-resistant Material

- Durable
- Designed to prolong catheter life
- Compatible with most commonly used catheter care protocols

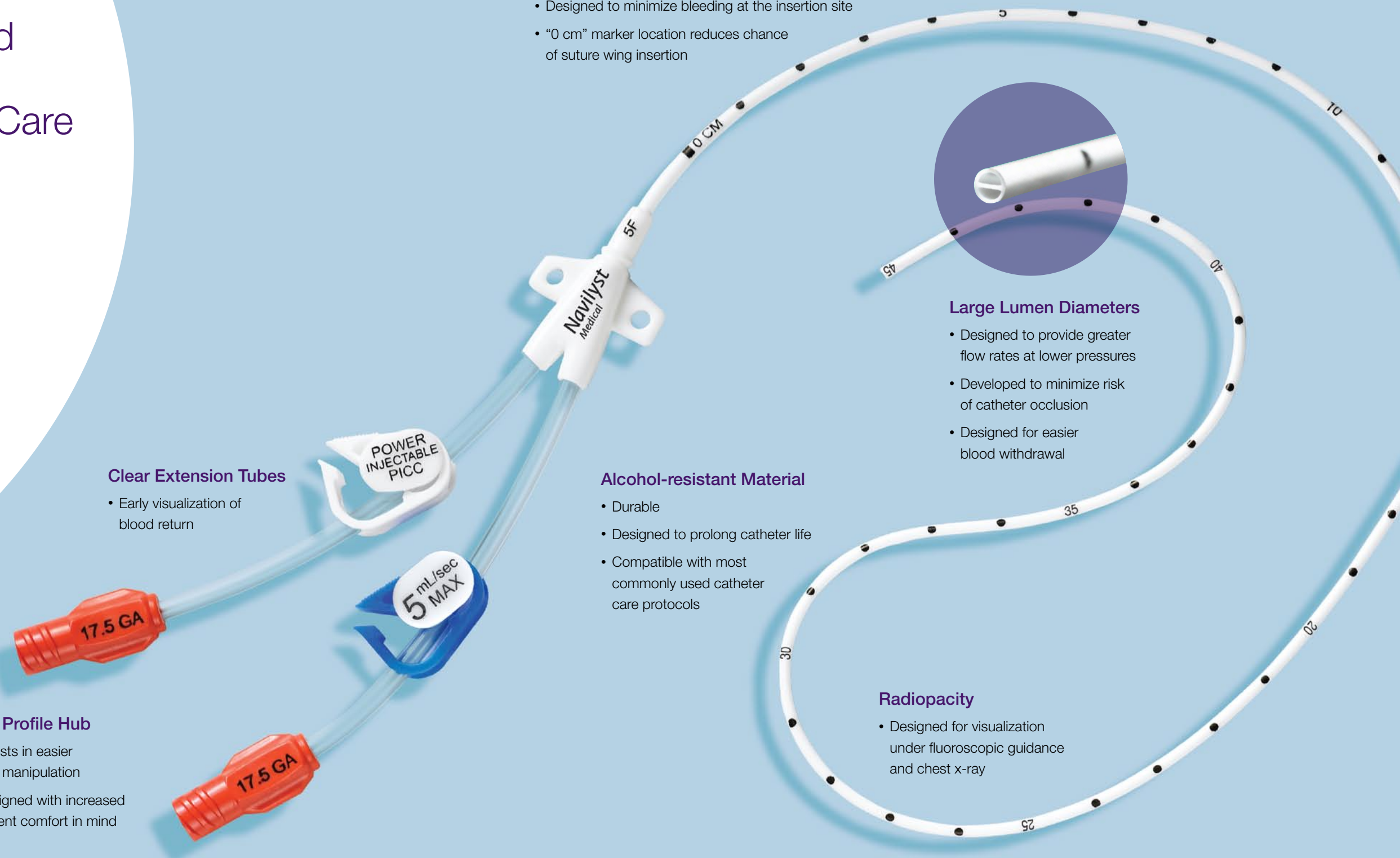
Radiopacity

- Designed for visualization under fluoroscopic guidance and chest x-ray

Large Lumen Diameters

- Designed to provide greater flow rates at lower pressures
- Developed to minimize risk of catheter occlusion
- Designed for easier blood withdrawal

Xcela® Power Injectable PICC



Confidence in Power, Confidence in Care—
Xcela Power Injectable PICC.

Xcela® Power Injectable PICC

Ordering Information

Catheter Kits

UPN	Order Number	Description	Max Flow Rate	Lumen Diameter (G)
M001456510	45-651	4 French, Single Lumen, 45 cm	4 mL/sec	17.0
M001456750	45-675	4 French, Single Lumen, 55 cm	3.5 mL/sec	17.0
M001456560	45-656	5 French, Single Lumen, 55 cm	5 mL/sec	15.5
M001456610	45-661	5 French, Dual Lumen, 45 cm	5 mL/sec	17.5/17.5
M001456700	45-670	5 French, Dual Lumen, 55 cm	4 mL/sec	17.5/17.5
M001456660	45-666	6 French, Dual Lumen, 55 cm	5 mL/sec	16.5/16.5

Kit includes: Catheter, Wire Guide/Flush Assembly, Hydrophilic-Coated Stiffening Wire, 60 cm Tape Measure, End Cap(s) and Catheter Securement Device.

Safety MST* Kits with 60 cm Wire

UPN	Order Number	Description	Max Flow Rate	Lumen Diameter (G)
M001456520	45-652	4 French, Single Lumen, 45 cm	4 mL/sec	17.0
M001456760	45-676	4 French, Single Lumen, 55 cm	3.5 mL/sec	17.0
M001456570	45-657	5 French, Single Lumen, 55 cm	5 mL/sec	15.5
M001456620	45-662	5 French, Dual Lumen, 45 cm	5 mL/sec	17.5/17.5
M001456710	45-671	5 French, Dual Lumen, 55 cm	4 mL/sec	17.5/17.5
M001456670	45-667	6 French, Dual Lumen, 55 cm	5 mL/sec	16.5/16.5

Kit includes: Catheter, Wire Guide/Flush Assembly, Hydrophilic-Coated Stiffening Wire, 21 G x 2.75" Safety Introducer Needle, 60 cm Guidewire with Floppy Platinum Tip, Safety Scalpel, 10 cm Sheath/Dilator, 60 cm Tape Measure, 10 mL Luer Lock Syringe(s), End Cap(s) and Catheter Securement Device.

Safety IR Kits with 145 cm Wire

UPN	Order Number	Description	Max Flow Rate	Lumen Diameter (G)
M001456530	45-653	4 French, Single Lumen, 45 cm	4 mL/sec	17.0
M001456770	45-677	4 French, Single Lumen, 55 cm	3.5 mL/sec	17.0
M001456580	45-658	5 French, Single Lumen, 55 cm	5 mL/sec	15.5
M001456630	45-663	5 French, Dual Lumen, 45 cm	5 mL/sec	17.5/17.5
M001456720	45-672	5 French, Dual Lumen, 55 cm	4 mL/sec	17.5/17.5
M001456680	45-668	6 French, Dual Lumen, 55 cm	5 mL/sec	16.5/16.5

Kit includes: Catheter, Wire Guide/Flush Assembly, Hydrophilic-Coated Stiffening Wire, 21 G x 2.75" Safety Introducer Needle, 145 cm Hydrophilic-Coated Guidewire with Floppy Platinum Tip, Safety Scalpel, 10 cm Sheath/Dilator, 60 cm Tape Measure, 10 mL Luer Lock Syringe(s), End Cap(s) and Catheter Securement Device.

Intermediate Safety MST* Kits with 45 cm Wire

UPN	Order Number	Description	Max Flow Rate	Lumen Diameter (G)
M001456540	45-654	4 French, Single Lumen, 45 cm	4 mL/sec	17.0
M001456780	45-678	4 French, Single Lumen, 55 cm	3.5 mL/sec	17.0
M001456590	45-659	5 French, Single Lumen, 55 cm	5 mL/sec	15.5
M001456640	45-664	5 French, Dual Lumen, 45 cm	5 mL/sec	17.5/17.5
M001456730	45-673	5 French, Dual Lumen, 55 cm	4 mL/sec	17.5/17.5
M001456690	45-669	6 French, Dual Lumen, 55 cm	5 mL/sec	16.5/16.5

Kit includes: Catheter, Stiffening Wire Guide/Flush Assembly, Hydrophilic-Coated Stiffening Wire, Face Mask, Two Tourniquets, Two 92 cm Tape Measures, Scissors, 24" x 36" Absorbent, Poly-Lined Patient Drape, 24" x 38" Absorbent, Poly-Lined Fenestrated Drape, 3 mL ChlorPrep® Applicator, 1 mL Luer Slip Syringe, 25 G x 5/8" Safety Hypodermic Needle, 21 G x 2.75" Safety Introducer Needle, 45 cm Guidewire with Double Floppy Tip, Safety Scalpel, 5 cm Sheath/Dilator, Non-Serrated Forceps, Five 2" x 2" Gauze Pads, Five 4" x 4" Gauze Pads, Two 10 mL Luer Lock Syringes, Two Saline Ampules, Two Safety Ampule Crackers, 5 µm Filter Straw, Two Saline Labels, End Cap(s), Skin Protectant Swabstick, Catheter Securement Device, Transparent Dressing and CSR Wrap.

Intermediate Peelable Safety Introducer Kits

UPN	Order Number	Description	Max Flow Rate	Lumen Diameter (G)
M001456550	45-655	4 French, Single Lumen, 45 cm	4 mL/sec	17.0
M001456790	45-679	4 French, Single Lumen, 55 cm	3.5 mL/sec	17.0
M001456600	45-660	5 French, Single Lumen, 55 cm	5 mL/sec	15.5
M001456650	45-665	5 French, Dual Lumen, 45 cm	5 mL/sec	17.5/17.5
M001456740	45-674	5 French, Dual Lumen, 55 cm	4 mL/sec	17.5/17.5

Kit includes: Catheter, Stiffening Wire Guide/Flush Assembly, Hydrophilic-Coated Stiffening Wire, Face Mask, Two Tourniquets, Two 92 cm Tape Measures, Scissors, 24" x 36" Absorbent, Poly-Lined Patient Drape, 24" x 38" Absorbent, Poly-Lined Fenestrated Drape, 3 mL ChlorPrep Applicator, 1 mL Luer Slip Syringe, 25 G x 5/8" Safety Hypodermic Needle, Peelable Sheath Safety Introducer Needle, Non-Serrated Forceps, Five 2" x 2" Gauze Pads, Five 4" x 4" Gauze Pads, Two 10 mL Luer Lock Syringes, Two Saline Ampules, Two Safety Ampule Crackers, 5 µm Filter Straw, Two Saline Labels, End Cap(s), Skin Protectant, Swabstick, Catheter Securement Device, Transparent Dressing and CSR Wrap.

*Modified Seldinger Technique.

ChlorPrep is a registered trademark of Enturia, Inc.

XCELA POWER INJECTABLE PICC

INDICATIONS: The Xcela Power Injectable PICC is indicated for short or long-term peripheral access to the central venous system for intravenous therapy, including but not limited to, the administration of fluids, medications and nutrients; the sampling of blood; and for power injection of contrast media.

CONTRAINDICATIONS: Venous thrombosis in any portion of the vein to be catheterized; conditions that impede venous return from the extremity such as paralysis or lymphedema after mastectomy; orthopedic or neurological conditions affecting the extremity; anticipation or presence of dialysis grafts or other intraluminal devices; hypercoagulopathy unless considerations are made to place the patient on anticoagulation therapy; pre-existing skin surface or subsurface infection at or near the proposed catheter insertion site; anatomical distortion of the veins from surgery, injury or trauma; anatomical irregularities (structural or vascular) which may compromise catheter insertion or catheter care procedures.

WARNINGS: Do not use the catheter with chemicals that are incompatible with any of its accessories, as catheter damage may occur; failure to warm contrast media to body temperature prior to power injection may result in catheter failure; failure to ensure patency of the catheter prior to power injection studies may result in catheter failure; power injector's pressure limiting (safety cut-off) feature may not prevent over-pressurization of occluded catheter; exceeding the maximum allowable flow rate may result in catheter failure and/or catheter tip displacement; catheter indication for power injection of contrast media implies the catheter's ability to withstand this procedure, but does not imply appropriateness of this procedure for a particular patient. A trained clinician is responsible for evaluating the health status of a patient as it pertains to a power injection procedure; the maximum pressure of power injectors used with the power injectable PICC must not exceed 300 psi.

ADVERSE EVENTS: Potential complications include, but are not limited to catheter dislodgement, embolism, fragmentation, migration, or rupture; air embolism; drug or contrast medium extravasation, or precipitate; intolerance reaction to contrast media.

PRECAUTIONS: Acetone and polyethylene glycol-containing ointments should not be used with polyurethane catheters, as these may cause failure of the device; if resistance is met while attempting to flush catheter, follow institutional protocol for occluded catheters; it is recommended that institutional protocols be considered for all aspects of catheter use. Bench testing has demonstrated that the Xcela Power Injectable PICC is capable of withstanding five power injections, which could reasonably occur during a 90-day catheter indwelling period; refer to Directions for Use for complete instructions.

CAUTION: Federal Law (USA) restricts this device to sale by or on the order of a physician.

For Bedside Placement



Ask about our Convenience Kit options.

Technical Support

for this product and other Navilyst Medical Vascular Access Products is available 24 hours a day by calling:

**Vascular Access
Products Reference
Line
800.513.6876**



Navilyst Medical, Inc.
26 Forest Street
Marlborough, MA 01752
www.navilystmedical.com

For more information, call
800.833.9973

© 2009 Navilyst Medical, Inc., or its affiliates.
All rights reserved.

eNAVB130 / 02/09